

# Evaluation of some Nodulation Genes found in Bambara Symbiotic Rhizobia Strains

AJAYI O.O.\*<sup>+</sup>, DIANDA M.<sup>+</sup>, FAGADE O.E.\*.

\*Department of Microbiology, Faculty of Science, University of Ibadan, Ibadan.

+ Soil microbiology unit, International Institute of Tropical Agriculture, Ibadan.

**Abstract:-** Rhizobia are known to have specificity for their leguminous host. Bambara groundnut although a legume has shown promiscuous ability by nodulating with many Species of Rhizobia. *Bradyrhizobium* spp. were recovered from selected Nigerian soils by trapping them in the nodules of Bambara groundnut (BG) using pot hose experiments. They were isolated from the nodules and authenticated in both screen house and field experiment. Six strains along-side USDA110 (control) were selected after they were found to be highly effective and efficient. The DNA was extracted and PCR was carried out to confirm for the presence of NodA, NodB, NodZa and NodZb genes. Nod A and Nod B which are conserved in all Rhizobia spp were found to be present. NodZa was found to be present in five of them while NodZ B was found to be present in all six of them. NodZa and NodZb which are functional genes in soybean symbiointic Rhizobia strains this therefore suggests that BG symbiotic rhizobia strains may be able to nodulate soybean legumes and that Nodza and Nodz B may possibly play a major role in the nodulation process of BG. keywords: Nodulation genes, Bambara groundnut, symbiotic Rhizobia

## I. INTRODUCTION

Bambara nut (*Vigna subterranean L. Verdc.*) is a legume seed crop with African origin and is highly underutilized. It has its origin from the Sahelian region of West Africa from the Bambara tribe near Timbuktu in Mali (1). It is currently now found in many parts of Asia, South America, and Oceania (2). It has several natural agronomic advantages including a high nutritive value, drought tolerance, and ability to produce in soils that are considered intolerable (3, 4). Little is known on the biodiversity of the rhizobial nodulating Bambara nut i.e. its cross inoculating property. Sequence analysis revealed that Bambara is nodulated by diverse microorganisms that belong to both  $\alpha$  and  $\beta$  rhizobia spp. (5, 6). Also, *Bradyrhizobium*, *Azorhizobium*, *mesorhizobium* and *ensifer* which are members of  $\alpha$ -proteobacteria have been listed as possible nodulators of Bambara (7, 8).

The common *nodABC* genes is found in all *Azorhizobium*, *Rhizobium*, and *Bradyrhizobium* isolates which have been studied so far (9). These genes are called common *nod* genes as they are structurally conserved and functionally interchangeable between *Rhizobium*,

*Azorhizobium*, and *Bradyrhizobium* species without altering the host range (Long, 1989). The common *nodABC* genes encode enzymes involved in the synthesis of the lipooligosaccharide core. Inactivation of the *nodABC* genes abolishes the ability to elicit any symbiotic reaction in the plant, including root hair curling (Hac2), infection thread formation (Inf2), cortical cell divisions, and nodule formation (Nod2), regardless of the host, the mode of infection, the type of nodule development, and the nodule location (11). NodB is a chito-oligosaccharide deacetylase (12), and NodA is required for the N-acylation of the amino-sugar backbone (13, 14). NodZA and NodZB are two genes that have been shown to have specificity for soybean associated rhizobia and most Rhizobia spp. that have ability to nodulate soybean (15,16) as they play a major role in the nodulation of soybean .

## II. METHODOLOGY

### A. Trapping of Rhizobia within the roots of Bambara plant

Soil samples were collected from fields where legumes were previously planted and transferred to the Laboratory. Sterilized seeds of Bambara groundnut were planted under sterile conditions in a screen house and thinned upon germination to one viable plant per pot. Plants were inoculated with the soil samples obtained and were allowed to grow for eight weeks to allow rhizobial in soil samples infect the root and form nodules. The plants were harvested and nodules were collected from their root (17).

### B. Isolation of Rhizobia

Rhizobia were isolated from nodules collected from the roots of the plants used for the trapping experiment on Congo red agar (18, 19) using spread plate method. Two undamaged nodules samples were picked from each plant and placed in sterile water for about 15 to 20 mins to rehydrate them after which they were surface sterilized using 3 % sodium hypochlorite for 3 minutes. They were then be rinsed with sterile water after which they were further sterilized with 95 % ethanol and then rinsed with six changes of sterile water (20). The nodules were then be transferred into sterilize petri-dishes, crushed with flamed glass rod and mixed with a few drops of sterile water. A loop full of the crushed nodule will be streaked on Congo red agar and incubated at 28°C for 5 - 7 days (21). Rhizobia isolates were identified and purified. Strains were authenticated in field and Screen-house experiments to confirm their effectiveness.

### C. DNA Extraction

Purified cultures of the six effective strains (RB1, RB 2, RB3, RB4, RB5 and RB6) and the control USDA110 strain were collected and inoculated in YM broth, after which they were incubated in a rotatory shaker for 5-7 days at 28°C. Cells were pelleted and DNA was extracted from the bacterial cultures using ZYMO bacterial/ fungal kit. Extracted DNA was loaded electrophoretically through 1% agarose gel stained with ethidium bromide (10mg/ml) at 100v for 1 hour. The bands were observed and photographed under UV light using BioDoc-IT imaging system to confirm the presence of DNA.

### D. DNA amplification and restriction

PCR was done to detect the presence of NodA, NodB, NodZA, and NodZB genes amplicon. For template preparation, extracted DNA. Aliquots (3µl) of the resulting lysate were directly used for PCR without further purification by adding master mix 12µl (One-Taq quick load 2x Master Mix with standard Buffer New England BioLabs Inc.), the primer 1 µl and nuclease free water 8µl was used for the reaction mix. The amplifications were performed in a GeneAmp PCR System 2400 (PE Biosystems) with the specific protocol required for each

primer (see Table 1). After the reaction, aliquots (3 µl) of the PCR products were loaded electrophoretically in 1.5 % agarose gel stained with ethidium bromide (10mg/ml) at 120v for 1 hour 30mins. The bands would be observed and photographed under UV light using BioDoc-IT imaging system.

### E. Nodulation Test of strains on soybean plants:

Soybean seeds were inoculated with the six strains including the control strain (USDA110) and planted on the field using a completely randomized block design. Plants were sampled at 6 weeks after planting and nodules formed were examined physically (21).

## III. RESULTS

### ➤ NODA

Nod A was more than 100kb was found to be present in all the six strains including USDA110 confirming that they are rhizobia strains as this nod gene is conserved/ found in all rhizobia and are functionally similar in Rhizobia spp. (Fig.1).

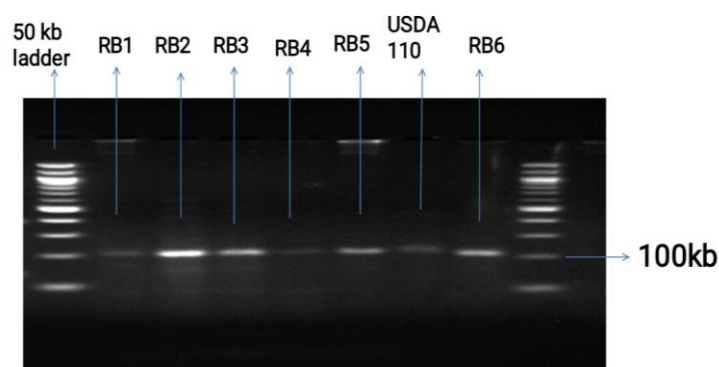


Fig 1:- Amplicon of NodA gene

### ➤ NODB

NodB was about 200kb and was found to be present in all the six strains confirming that they are rhizobia strains as this gene is found in all rhizobia and are functionally similar in Rhizobia spp. (Fig.2)

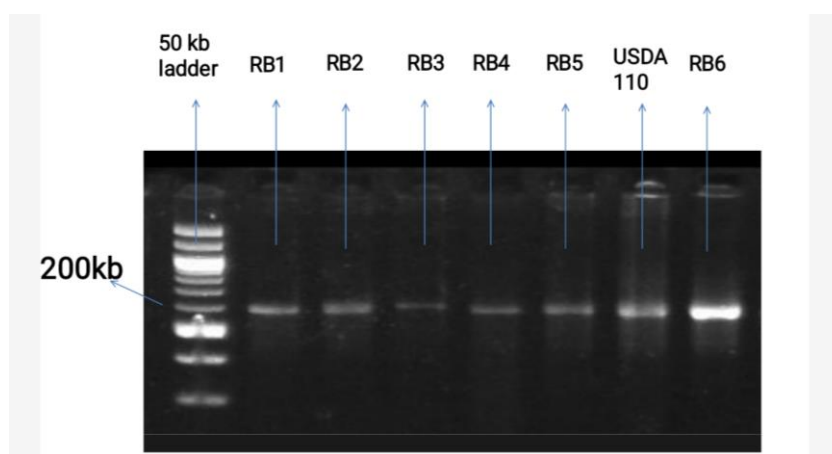


Fig 2:- Amplicon of NodB gene.

➤ *NodZA*

*NodZA* was found in all the strains except for RB1 where it was completely absent. The gene showed polymorphism having varying bands of varying sizes, this showed that the strains that had this gene can nodulate soybean strains (Fig. 3).

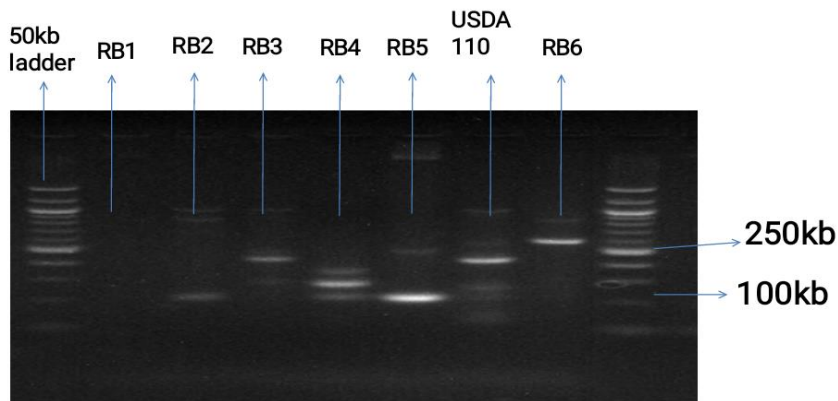


Fig 3:- Polymorphic bands of amplicons of Nodza gene.

➤ *NodZB*

*NodZB* was found in all the strains and showed polymorphism having 5 different bands of varying sizes, this showed that the strains can nodulate soybean (Fig.4).

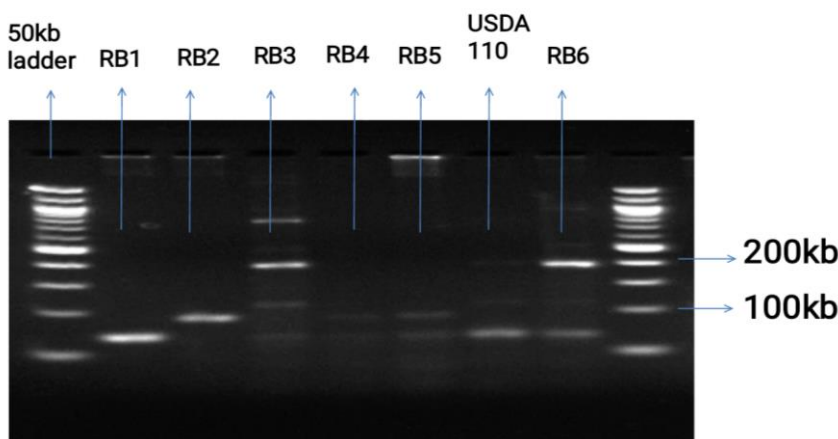


Fig 4:- Polymorphic bands of amplicons of Nodzb gene

| Primer  | 5'- 3'                         | Annealing temperature (°C) |      |
|---------|--------------------------------|----------------------------|------|
| Nodz- A | GGTTTGGCGACTGTCTGTGGTC (F)     | 60.5                       | (16) |
|         | TTCCACCATGTTGGAAAGAATGGTCC (R) | 59.4                       |      |
| Nodz- B | TGATGCCTGCCTGATGTGGCG (F)      | 62.8                       | (16) |
|         | ATCTTCGCCATTGCCATGCCG (R)      | 61.1                       |      |
| Nod- A  | TTTGAGCCCGACCCCGA (F)          | 62.0                       | (22) |
|         | CCGTTTCGGTCGCTGATGGC (R)       | 61.5                       |      |
| Nod- B  | ATCAGCGACCGAAACGGGACG (F)      | 62.1                       | (23) |
|         | GGCCGATCAAACCGGACCCA (R)       | 62.6                       |      |

Table 1:- Sequence of primers used for PCR.

**KEY-** F- forward; R- reverse; G- glutamine; T- thiamine; A- adenosine; C- cytosine.

**Nodulation of soybean:** soybean plants inoculated with the strains were able to nodulate soybean had nodules that had mostly pinkish showing that nitrogen fixation occurred and was effective (table 1). The nodules were also medium in size (Table 2).

| Treatment | Nodule colour | Nodule size |
|-----------|---------------|-------------|
| RB1       | Pink          | Medium      |
| RB2       | Pink          | Medium      |
| RB3       | pink          | Medium      |
| RB4       | Pink          | Medium      |
| RB5       | pink          | Medium      |
| RB6       | pink          | Medium      |
| USDA110   | Pink          | medium      |

Table 2:- Nodulation test for strains in Soybean

#### IV. DISCUSSION

Both Nod A and Nod B were found to be present in all the strains confirming that they are rhizobia strains as these two nod genes are found in all rhizobia and are functionally similar in Rhizobia spp. This is similar to the findings of (24, 25, 26) where both genes have been found to be conserved in Rhizobia spp. NodZA and NodZB were also found in all strains, but showing polymorphism, this showed that the strains can nodulate soybean strains as these two genes are shown to have specificity for soybean associated rhizobia because their products are the fucosyl group which is a common product for the symbiont of soybean and most rhizobia spp that have ability to nodulate soybean as confirmed by (15,16). Five of the six strains used were confirmed to be *Bradhyrhizobium* sp particularly *Bradhyrhizobium vignea*. This is similar to the findings of (8, 15, 27) where *Bradhyrhizobium* spp. was listed as one of the nodulating species for Bambara groundnut.

#### V. CONCLUSION

The Molecular studies carried out showed that Bambara groundnut symbiotic strains also carry the NodZA and NodZB in addition to NodA and NodB. This suggests that these strains may also be used as inoculants for promiscuous soybean varieties and that they may also play salient roles in the nodulation process of Bambara groundnut plants.

#### REFERENCES

- [1]. Nwanna L. C., Enujiughu V. N., Oseni A. O. and Nwanna E. E. (2005). Possible effect of fungal fermentation on Bambara groundnuts (*Vigna subterranean* (L. verde) as a feed stuff resource. *Journal of Food Technology*. 3: 572- 575.
- [2]. Baudoin J. P. and Mergeai G. (2001). Grain Legumes in Crop production in Tropical Africa. P. 313 –317.
- [3]. Anchinah V. M., Yiridoe E. K. and Bennett-Lartey S. O. (2001) Enhancing sustainable production and genetic resource conservation of Bambara groundnut. *A survey of indigenous agricultural knowledge system. Outlook on Agriculture* 30: 281- 288.
- [4]. Ocran V. K., Delimini L. L., Asuboah R. A. and Asiedu E. A. (1998). Seed management manual for Ghana MOFA, Accra, Ghana.
- [5]. Doku E. V. and Karikari S. K. (1971). Bambara groundnut. *Economic Botany*. 25: 225 - 262.
- [6]. Kanu S. A. and Dakora F. D. (2012). Symbiotic nitrogen contribution and biodiversity of bacteria nodulating *Psoralea* species in the Cape Fynbos of South Africa. *Soil . Biology and Biochemistry*. 54: 68– 76.
- [7]. Sprent J. I., Odee D. W and Dakora F. T. (2010). African legumes: A vital but under-utilized resource. *Journal of Experimental Botany*. 61: 1257 - 1265.
- [8]. Mohale C. K., Belane A. K. and Dakora F. D. (2013). Why is Bambara groundnut able to grow and fix N<sub>2</sub> under contrasting soil conditions in different agroecologies? A presentation at the 3<sup>rd</sup> international scientific conference on neglected and underutilized species on 26<sup>th</sup> September, 2013 in Accra Ghana. Pp. 13-16.
- [9]. Stacey, G. 1990. Workshop summary: compilation of the nod, fix and nif genes of Rhizobia and information concerning their function. pp. 239-44
- [10]. Long, S. R. (1989). Rhizobium genetics. *Annual Reviews of Genetics*. 23:483-506. 13. Atkinson E. M., Palcic M. M., Hindsgaul O. and Long S. R. (1994) *Proceedings of National Academy of Science USA*. 91:8418–8422.
- [11]. Martinez, E., Romero, D. , Palacios, R. 1990. The Rhizobium genome. *Crit. Rev. Plant Sci*. 9:59-93.
- [12]. John M., Rohrig H., Schmidt J., Wieneke U. and Schell J. (1993). *Proceedings of National Academy of Science USA*. 90:625–629.
- [13]. Atkinson E. M., Palcic M. M., Hindsgaul O. and Long S. R. (1994) *Proceedings of National Academy of Science USA*. 91:8418–8422.
- [14]. Rohrig H., Schmidt J., Wieneke U., Kondorosi E., Barlier I., Schell J. and John M. (1994). *Proceedings of National Academy of Science USA*. 91: 3122-3126.
- [15]. Stacey, G., S. Luka, J. Sanjuan, Z. Banfalvi, A.J. Nieuwkoop, J.Y.Chun, L.S. Forsberg, and R. Carlson. (1994). NodZ, a unique host-specific nodulation gene, is involved in the fucosylation of the lipooligosaccharide nodulation signal of *Bradyrhizobium japonicum*. *Journal of Bacteriology*. 176:620–633.
- [16]. Branden J. Furseth, Shawn P. Conley, and Jean-Michel Ané. (2010). Enumeration of Soybean-Associated Rhizobia with Quantitative Real-Time Polymerase Chain Reaction *Crop Science*. 50: 2591– 2596.
- [17]. Onyango B. O, Koech P. K, Anyango B, Nyunja R. A, Skilton R. A, Stomeo F. (2015) Morphological, genetic and symbiotic characterization of root nodule bacteria isolated from Bambara groundnuts (*Vigna subterranea* L. Verde) from soils of Lake Victoria basin, western Kenya. *Journal of Applied Biology and Biotechnology*. 3 (01): 001-010.
- [18]. Vincent J.M. (1970). *A Manual for the Practical Study of Root Nodule Bacteria*, Blackwell Scientific, Oxford.
- [19]. Woomer P. L., Karanja N. and Stanley M. (2011). A revised manual for rhizobium methods and standard protocols ([www.n2africa.org](http://www.n2africa.org)).

- [20]. Somasegaran, P. and H. J. Hoben (2012). Handbook for rhizobia: methods in legume-Rhizobium technology, Springer Science & Business Media.
- [21]. Haukka K., Lindstrom K. and Young J.P. 1998. Three phylogenetic groups of nodA and nifH genes in Sinorhizobium and Mesorhizobium isolates from leguminous trees growing in Africa and Latin America. Applied and Environmental Microbiology 64, 419–426.
- [22]. Chambon R., Pradeau S. , Fort S. , Cottaz S. and Armand S. (2017). High yield production of Rhizobium NodB chitin deacetylase and its use for in vitro synthesis of lipo-chitinoligosaccharide precursors. *Carbohydrate Research*. 442: 25 - 30.
- [23]. Triplett E. W., Sadowsky Mj, 1992. Genetics of competition for Nodulation of Legumes. *Ann Rev Microbiol* 46: 399- 428.
- [24]. Toolarood A. A. Soltani, Alikhani H. A., Salehi Gh. , Asadi-Rahmani H., Khavazi K., Poorbabaee A. A and Lindström K. (2012) Genetic diversity and phylogeny of alfalfa nodulating rhizobia assessed by nifH and nodA genes *International Research Journal of Applied and Basic Sciences*. 3 : 1470-1476.
- [25]. Reeve, W., Ardley, J., Tian, R., Eshragi, L., Yoon, J. W., Ngamwisetkun, P., Seshadri, R., Ivanova, N. N., and Kyrpides, N. C. (2015). A genomic encyclopedia of the root nodule bacteria: Assessing genetic diversity through a systematic biogeographic survey. *Standard Genomic Science* 10:14.
- [26]. Fadimata Y. I. Ibny1, Sanjay K. Jaiswal, Mustapha Mohammed and Felix D. Dakora (2019). Symbiotic effectiveness and ecologically adaptive traits of native rhizobial symbionts of Bambara groundnut (*Vigna subterranea* L. Verdc.) in Africa and their relationship with phylogeny *SCIENTIFIC REPORTS nature research* | 9:12666 | <https://doi.org/10.1038/s41598-019-48944-1>